

Sabroe SMC 106 L mk2 package

Specifications

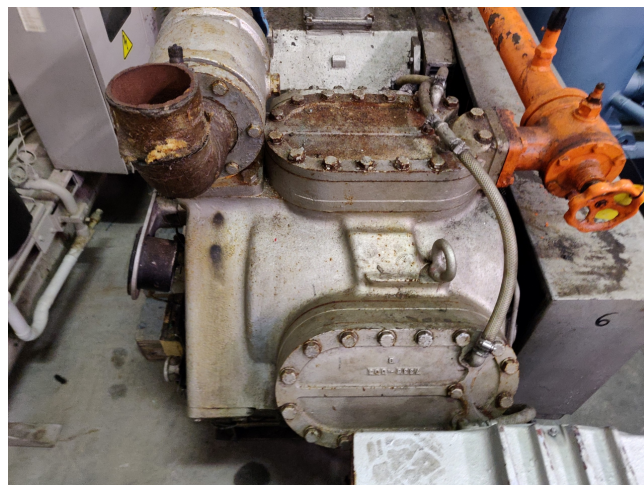
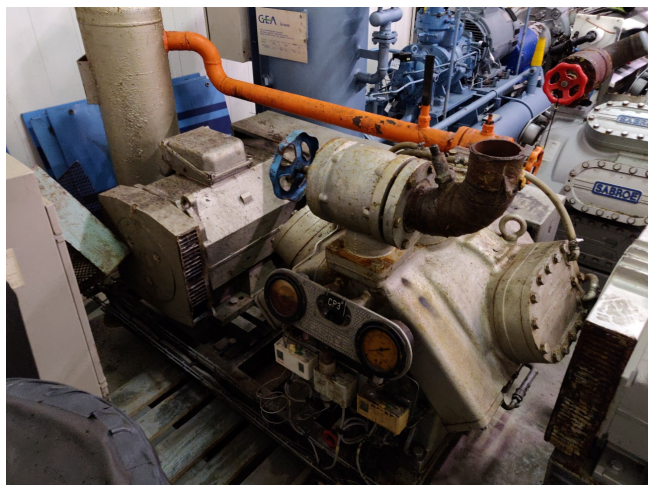
Brand	Sabroe
Type	SMC 106 L mk2 package
Refrigerant	NH 3 (ammonia)
kW at 0°C/+40°C	293
kW at -5°C/+40°C	191 *
kW at -40°C/+40°C	53 #
Electromotor Specs	N/A
Remarks	<p>*capacity is based on -10°C/+35°C //</p> <p>#capacity based on -40°C/-10°C and 1500 RPM see pdf //</p> <p>Electromotor 40/60kW at 980/1480 RPM</p>



Description

Used Sabroe SMC 106 L mk2 package

Used, well maintained JCI Sabroe SMC 106 L mk2 package Ammonia NH3 reciprocating compressor. Our capacity table is based on ammonia NH3. For all the other specs, see the picture of the manufacturer model plate or the attached pdf file (if available). *Why choose for HOSBV? Were not only the largest used refrigeration specialist in Europe, but also, we deliver all equipment including an extensive test, warranty and industrial cleaning. *Optional we can also perform a new paint job and arrange the logistics.



- ATEX-compliant configuration
- Special vibration dampening.

Model	Number of cylinders	Swept volume at 1500 rpm	Swept volume at 1800 rpm	R217 *						Unit dimensions in mm			Weight excluding motor	Sound pressure level at 1500 rpm	Sound pressure level at 1800 rpm
				Nominal capacities in kW at 1500 rpm		Nominal capacities in kW at 1800 rpm		L	W	H					
				Single/High-stage	Booster	Single/High-stage	Booster								
				-10/-35°C	0/-40°C	-10/-35°C	0/-40°C	-10/-35°C	0/-40°C				kg	db(A)	db(A)
SMC 104 S	4	226	271	127	195	35	153	235	42	2261-2865	1213	1229	1195	79	82
SMC 104 L	4	261	319	165	250	47	198	300	57	2261-2865	1213	1229	1215	80	83
SMC 104 E	4	339	N/A	203	306	58	N/A	N/A	N/A	2261-2865	1213	1229	1220	80	83
SMC 106 S	6	339	437	191	291	53	229	352	64	2286-2890	1267	1247	1390	81	83
SMC 106 L	6	424	529	247	375	71	297	450	85	2286-2890	1267	1247	1400	82	84
SMC 106 E	6	509	N/A	304	459	87	N/A	N/A	N/A	2286-2890	1267	1247	1430	82	84
SMC 108 S	8	452	543	255	391	71	306	469	85	2311-2925	1261	1247	1395	82	84
SMC 108 L	8	566	679	280	500	94	396	600	113	2311-2925	1261	1247	1420	83	85
SMC 108 E	8	679	N/A	406	612	116	N/A	N/A	N/A	2311-2925	1261	1247	1450	83	85
SMC 110 S	12	679	814	362	586	106	459	703	127	3179-3687	1475	1448	2351	83	85
SMC 110 L	12	846	1018	495	750	141	593	900	169	3179-3687	1475	1448	2380	83	86
SMC 110 E	12	1018	N/A	608	918	173	N/A	N/A	N/A	3179-3687	1475	1448	2330	83	86
SMC 116 S	16	905	1086	530	782	141	611	938	170	3129-3737	1536	1445	2505	84	86
SMC 116 L	16	1111	1367	639	1000	188	791	1200	236	3129-3737	1536	1445	2535	84	87
SMC 116 E	16	1367	N/A	812	1224	231	N/A	N/A	N/A	3129-3737	1536	1445	2590	84	87